

# mk-toripersist

Quick start manual for the shell-script

**mk-toripersist**

to create a persistent live USB pendrive with ToriOS

by sudodus alias Nio Wiklund

**WARNING !!!**

**The drive will be overwritten  
and the data will be lost**

# mk-toripersist

## Files

console.txt # the console window with help text  
mk-toripersist # the shell-script that does the work  
mk-toripersist\_quick-start-manual.pdf # this manual  
syslinux.cfg # a custom configuration file  
torios.iso # the source file for the operating system

### Screenshots:

making-partitions-1.png  
making-partitions-1-torios.png  
making-partitions-2.png  
unetbootin.png  
select-exit\_do-not-reboot.png

# sudo ./mk-toripersist /dev/sd**x**

- Run with superuser privileges (sudo) in the directory where you have the files.
- Select the target drive carefully. Check that it is the drive you want to use, for example **/dev/sdd**
  - This pendrive is re-used (for a new version of ToriOS)

```
MODEL          NAME    FSTYPE LABEL          MOUNTPOINT          SIZE
Extreme        sdd
|-sdd1 vfat    ToriPersist /media/ToriPersist  1G
`-sdd2 ext2    live-rw   /media/live-rw      2G
```

# Console

Update  
**torios.iso**  
(symbolic  
link works)

Tips for  
gparted

Tips for  
Unetbootin

Ready  
to use

```
$ sudo ./mk-toripersist /dev/sdd
```

```
[sudo] password for sudodus:
```

MODEL	NAME	FSTYPE	LABEL	MOUNTPOINT	SIZE
Extreme	sdd				29.8G
	-sdd1	vfat	ToriPersist	/media/ToriPersist	1G
	`-sdd2	ext2	live-rw	/media/live-rw	2G

```
Go ahead and overwrite /dev/sdd ? (g/q) g
```

```
FINAL WARNING: Are you sure /dev/sdd ? (y/n) y
```

```
Using 'syslinux.cfg' in the current directory
```

```
Using 'torios.iso' in the current directory
```

```
1024+0 records in
```

```
1024+0 records out
```

```
1048576 bytes (1.0 MB) copied, 0.158401 s, 6.6 MB/s
```

```
-----  
Use gparted
```

```
-----  
Suggested values, may be changed according to the size of 'torios.iso'  
/dev/sdd1: file system=fat32 size=1-2 GB to host config and iso files  
/dev/sdd2: file system=ext2 size=rest of device
```

```
=====
```

```
libparted : 2.3
```

```
=====
```

```
/dev/sdd: unrecognised disk label
```

```
/dev/sdd: unrecognised disk label
```

```
mkfs.vfat 3.0.12 (29 Oct 2011)
```

```
tune2fs 1.42 (29-Nov-2011)
```

```
-----  
Use Unetbootin
```

```
-----  
Use a current local ToriOS iso file if available (copy and paste)
```

```
/media/multimed-2/test/torios/persist/torios.iso
```

```
Do not use Unetbootin's persistence (keep it at 0 MB)
```

```
Check and change the selected target drive, should be /dev/sdd1
```

```
Syncing the target device ...
```

MODEL	NAME	FSTYPE	LABEL	MOUNTPOINT	SIZE
Extreme	sdd				29.8G
	-sdd1	vfat	ToriPersist		768M
	`-sdd2	ext2	live-rw		29.1G

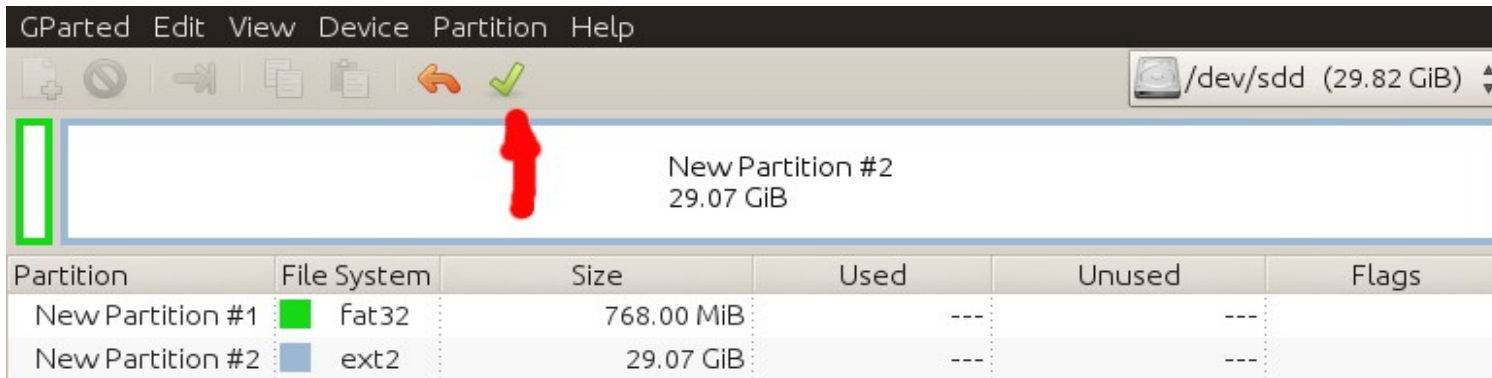
```
The target device is ready to use.
```

```
It contains the source file 'torios.iso'
```

```
$
```

Two checkpoints

# Making partitions

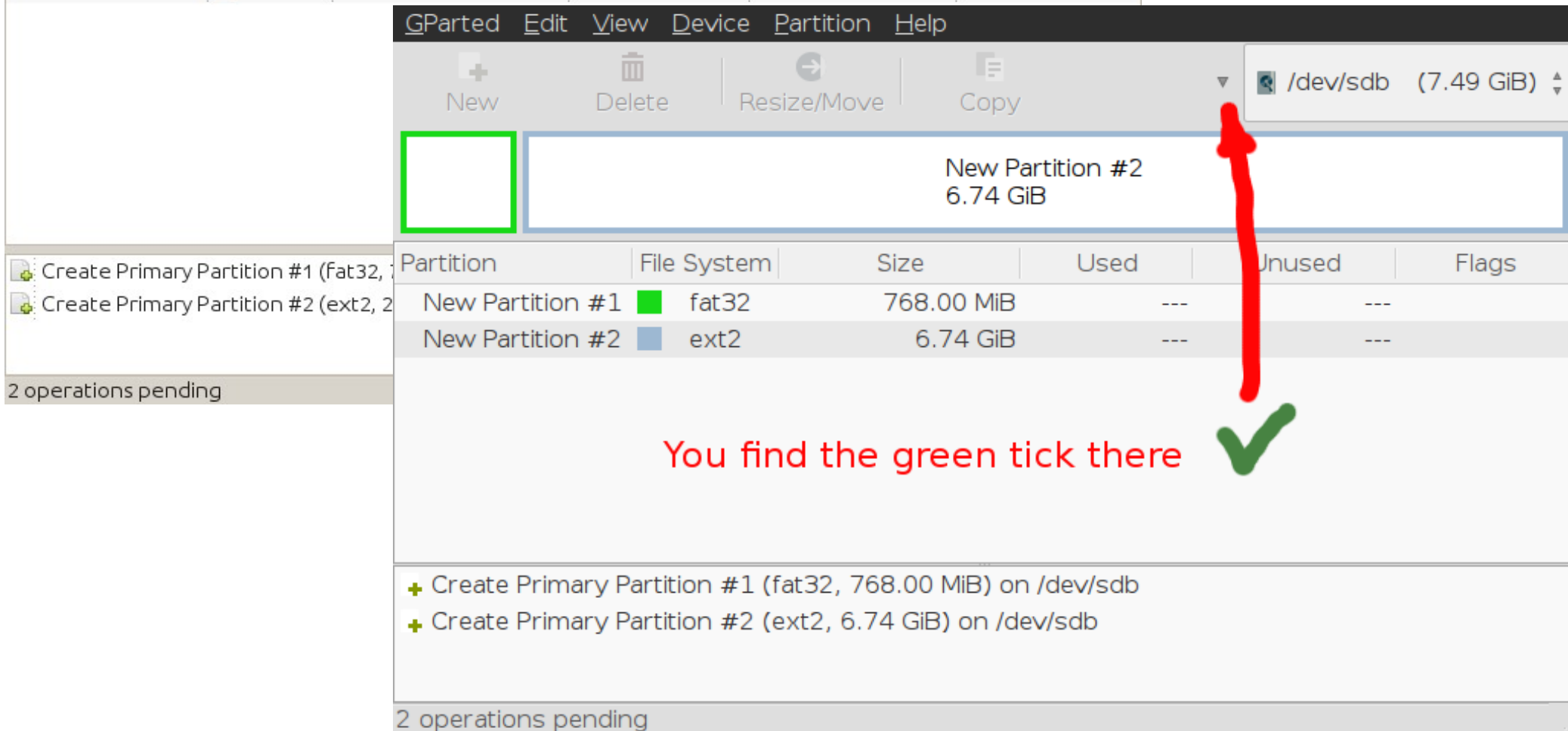


GPstarted Edit View Device Partition Help

/dev/sdd (29.82 GiB)

New Partition #2  
29.07 GiB

Partition	File System	Size	Used	Unused	Flags
New Partition #1	fat32	768.00 MiB	---	---	
New Partition #2	ext2	29.07 GiB	---	---	



GPstarted Edit View Device Partition Help

/dev/sdb (7.49 GiB)

New Partition #2  
6.74 GiB

Partition	File System	Size	Used	Unused	Flags
New Partition #1	fat32	768.00 MiB	---	---	
New Partition #2	ext2	6.74 GiB	---	---	

You find the green tick there ✓

- + Create Primary Partition #1 (fat32, 768.00 MiB) on /dev/sdb
- + Create Primary Partition #2 (ext2, 6.74 GiB) on /dev/sdb

2 operations pending

# Making partitions (2)

The screenshot shows the GParted interface for the device /dev/sdd (29.82 GiB). The partition table is as follows:

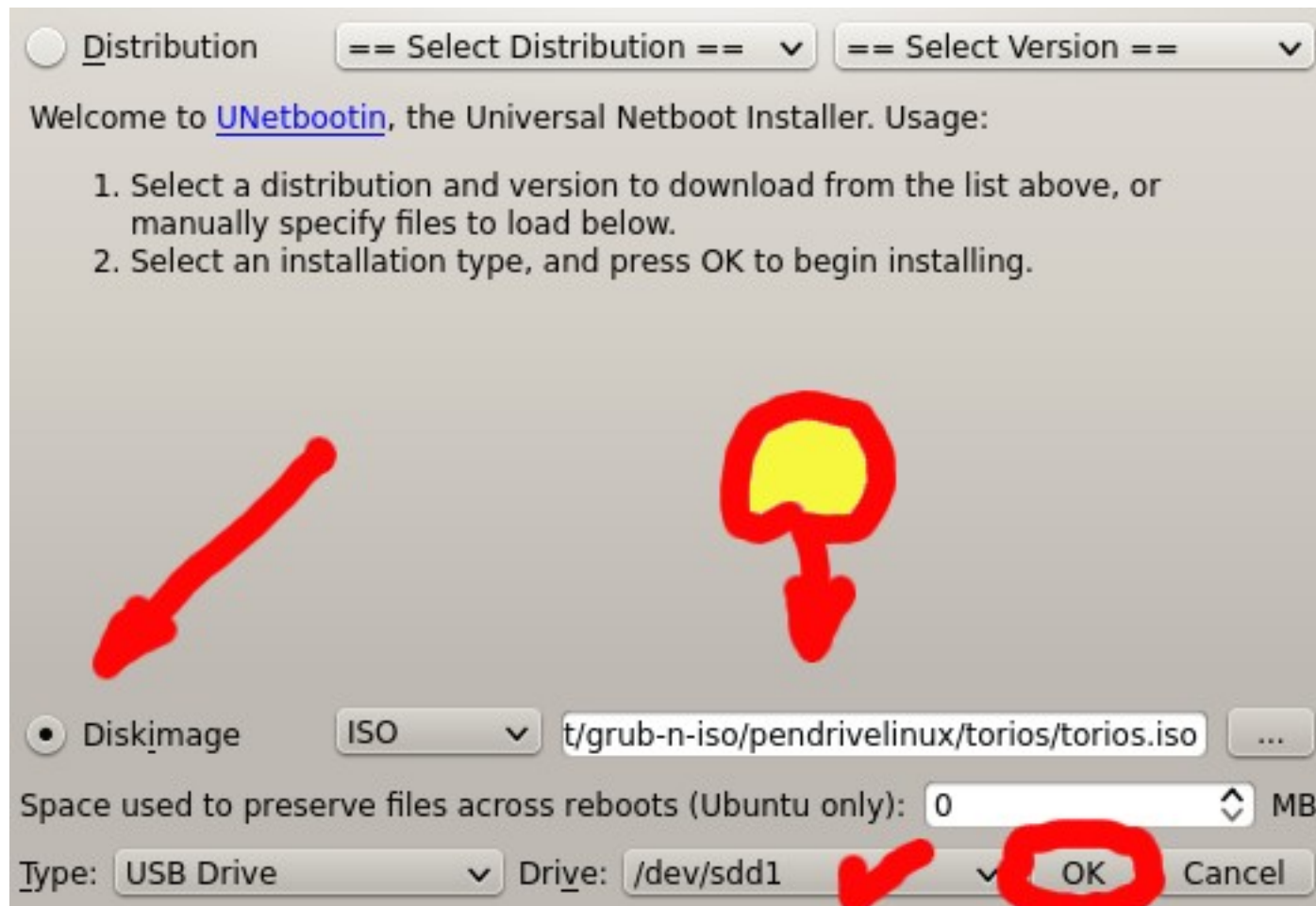
Partition	File System	Size	Used	Unused	Flags
/dev/sdd1	fat32	768.00 MiB	1.52 MiB	766.48 MiB	
/dev/sdd2	ext2	29.07 GiB	510.98 MiB	28.57 GiB	

Ready to exit

0 operations pending

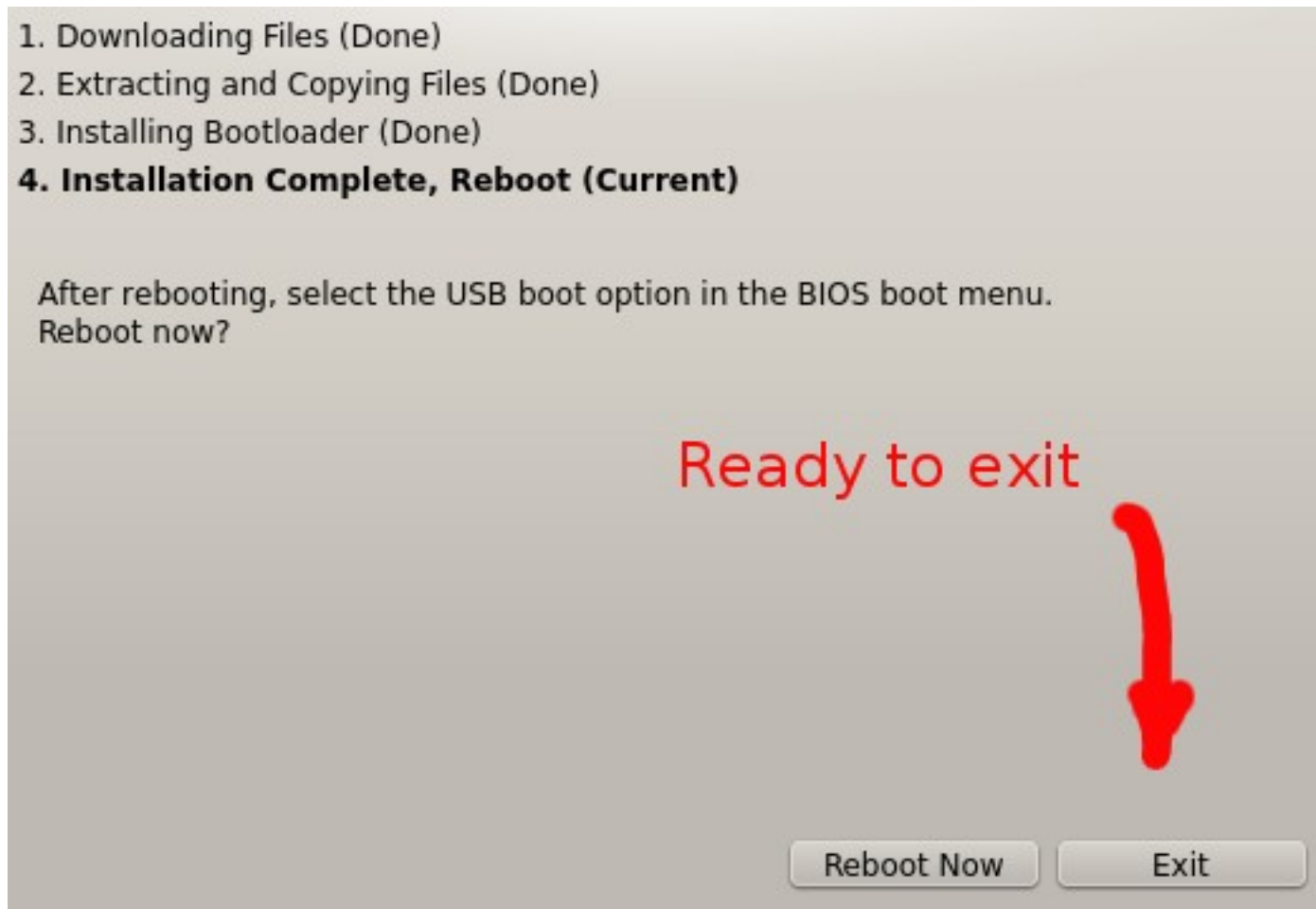
# Unetbootin

- You can copy and paste the name of the ISO file (yellow highlight)



# Exit from Unetbootin

- There are more tasks in the shell-script. Do not reboot, please exit!





# The target device is ready to use

```
Syncing the target device ...
```

MODEL	NAME	FSTYPE	LABEL	MOUNTPOINT	SIZE
Extreme	sdd				29.8G
	-sdd1	vfat	ToriPersist		768M
	`-sdd2	ext2	live-rw		29.1G

```
The target device is ready to use.
```

```
It contains the source file 'torios.iso'
```

```
$
```